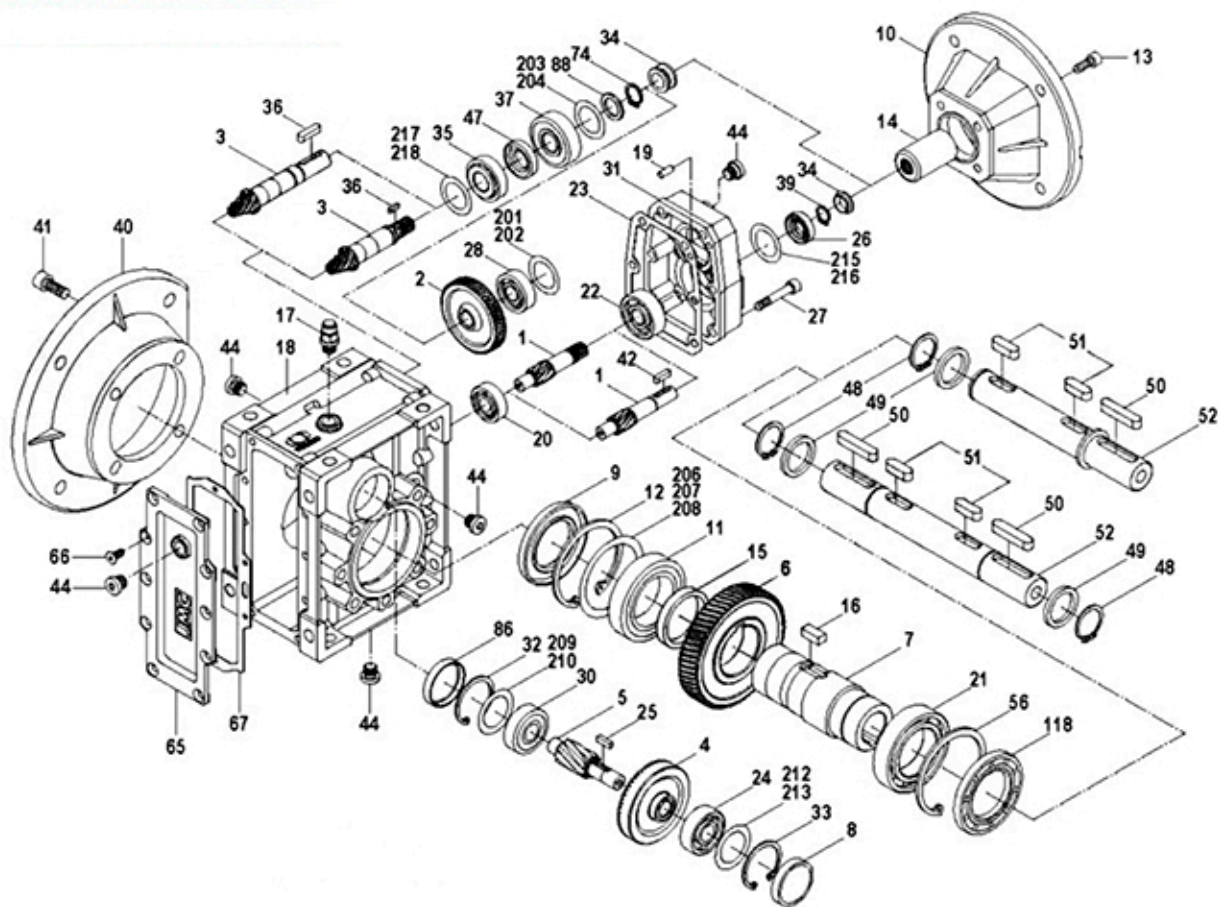




## Estructura Básica/Basic structure



|    |   |    |   |     |   |
|----|---|----|---|-----|---|
| 1  | Piñón/ Pinion                               | 25 | Llave/ Key                                    | 56  | Agujero-circlip/Hole-circlip                  |
| 2  | Engranaje/Gear                              | 26 | Sello de Aceite/ Oil Seal                     | 65  | Tapa de caja de cambios/ Gearcase Cover       |
| 3  | Eje del piñón/ Pinion Shaft                 | 27 | Tomillo hexagonal interior/ Inner hex screw   | 66  | Tomillo hundido hexagonal/ Hexagon sunk screw |
| 4  | Engranaje/Gear                              | 28 | Rodamiento/ Bearing                           | 67  | Junta de goma/ Rubber Gasket                  |
| 5  | Eje del piñón/ Pinion Shaft                 | 30 | Rodamiento/ Bearing                           | 74  | Eje-circlip/ Shaft-circlip                    |
| 6  | Engranaje/Gear                              | 31 | Caja de cambios de 3 etapas/ 3 stage gearcase | 86  | Tapa de cierre/ Closing cap                   |
| 7  | Eje hueco/Hollow Shaft                      | 32 | Agujero-circlip/Hole-circlip                  | 88  | Lavadora/ Washer                              |
| 8  | Tapa de cierre/ Closing Cap                 | 33 | Agujero-circlip/Hole-circlip                  | 118 | Sello de Aceite/ Oil Seal                     |
| 9  | Sello de aceite/ Oil Seal                   | 34 | Botas de Caucho/ Rubbet Boot                  | 201 | Anillo de calce/ Shim ring                    |
| 10 | Brida de entrada/Intput Flange              | 35 | Rodamiento/ Bearing                           | 202 | Anillo de calce/ Shim ring                    |
| 11 | Rodamiento/ Bearing                         | 36 | Llave/ Key                                    | 203 | Anillo de calce/ Shim ring                    |
| 12 | Agujero-circlip/Hole-circlip                | 37 | Rodamiento/ Bearing                           | 204 | Anillo de calce/ Shim ring                    |
| 13 | Tomillo hexagonal interior/ Inner hex screw | 39 | Eje-circlip/ Shaft-circlip                    | 206 | Anillo de calce/ Shim ring                    |
| 14 | Eje de entrada/ Intput Shaft                | 40 | Brida de salida/ Output Flange                | 207 | Anillo de calce/ Shim ring                    |
| 15 | Espaciador/ Spacer                          | 41 | Tomillo hexagonal interior/ Inner hex screw   | 208 | Anillo de calce/ Shim ring                    |
| 16 | Llave/ Key                                  | 42 | Llave/ Key                                    | 209 | Anillo de calce/ Shim ring                    |
| 17 | Válvula de ventilación/ Breather Valve      | 44 | tapón de aceite/ Oil plug                     | 210 | Anillo de calce/ Shim ring                    |
| 18 | Caja de engranajes/ Cajas de Engranajes     | 47 | Sello de Aceite/ Oil Seal                     | 212 | Anillo de calce/ Shim ring                    |
| 19 | Rígido/ Stifte                              | 48 | Eje-circlip/ Shaft-circlip                    | 213 | Anillo de calce/ Shim ring                    |
| 20 | Rodamiento/ Bearing                         | 49 | Empaquetadura/ Gasket                         | 215 | Anillo de calce/ Shim ring                    |
| 21 | Rodamiento/ Bearing                         | 50 | Llave/ Key                                    | 216 | Anillo de calce/ Shim ring                    |
| 22 | Rodamiento/ Bearing                         | 51 | Llave/ Key                                    | 217 | Anillo de calce/ Shim ring                    |
| 23 | Junta de carcasa/ Housing Gasket            | 52 | Doble eje de salida/ Double output shaft      | 218 | Anillo de calce/ Shim ring                    |
| 24 | Rodamiento/ Bearing                         | 53 | Eje de salida único/ Single output shaft      |     |   |

# E-KM/KB



## CARACTERÍSTICAS DE LA ESTRUCTURA/ STRUCTURE FEATURES

1. Hecho de aleación de aluminio de alta calidad, liviano y no se oxida.
2. accionamiento mediante engranaje hipois, gran par de salida.
3. Funcionamiento suave y bajo nivel de ruido, puede funcionar durante mucho tiempo en condiciones terribles.
4. Alta eficiencia radiante.
- 5, atractivo en apariencia, duradero en vida útil y pequeño en volumen.
- 6, adecuado para instalación omnidireccional.

- 1, Made of high-quality aluminum alloy, light in weight and non-rusting.
- 2, Drive by hypois gear, Large in output torque.
3. Smooth in running and low in noise, can work long time in dreadful conditions.
4. High in radiating efficiency.
- 5, Good-looking in appearance, durable in service life and small in volume.
- 6, Suitable for omnibearing installation.

## MATERIAL PRINCIPAL/ MAIN MATERIAL

1, Vivienda: aleación de aluminio fundido a presión (tamaño del marco: 25 a 55);  
2, engranaje: 20CrMnTi, el tratamiento térmico de carbonización hace que la dureza de la superficie del engranaje sea de hasta 56-62 HRC. Conserva el espesor de la capa de carburación entre 0,3 y 0,5 mm después de un rectificado preciso.

- 1, Housing: die-cast aluminum alloy (frame size: 25 to 55);
- 2, Gear: 20CrMnTi, carbonize heat treatment make the hardness of gear's surface up to 56-62 HRC, retain carburization layer's thickness between 0.3 and 0.5mm after precise grinding.

## CAMPO DE APLICACIÓN/ APPLICATION FIELD

Maquinaria de embalaje, maquinaria química, industrias de protección ambiental, maquinaria alimentaria, maquinaria de línea de ensamblaje de automóviles, etc.

Packing machinery, chemical machinery, environmental protection industries, food machinery, auto assembling line machinery, etc.



# adpmotion

## TABLAS DE SELECCIÓN DE REDUCTORES/ GEAR UNIT SELECTION TABLES

### E-KM25.. $n_1=1400r/min$ 120Nm

| Unidades de engranajes<br>Gear Units |  | i<br>Nominal | i<br>Actual | $n_2$<br>[r/min] | $M_{2n}$<br>[Nm] | $Fr_2$<br>[N] |
|--------------------------------------|--|--------------|-------------|------------------|------------------|---------------|
| <b>3 Fase/ Stage</b>                 |  |              |             |                  |                  |               |
| E-KM25C                              |  | 300          | 291.79      | 4.8              | 110              | 4100          |
| E-KM25C                              |  | 250          | 244.29      | 5.8              | 130              | 4100          |
| E-KM25C                              |  | 200          | 200.44      | 7.0              | 130              | 4100          |
| E-KM25C                              |  | 150          | 146.67      | 9.6              | 130              | 4000          |
| E-KM25C                              |  | 125          | 120.34      | 12               | 130              | 3770          |
| E-KM25C                              |  | 100          | 101.04      | 14               | 130              | 3560          |
| E-KM25C                              |  | 75           | 74.62       | 19               | 130              | 3220          |
| E-KM25C                              |  | 60           | 62.36       | 23               | 120              | 3030          |
| E-KM25C                              |  | 50           | 52.36       | 27               | 110              | 2860          |
| <b>2 Fase/ Stage</b>                 |  |              |             |                  |                  |               |
| E-KM25B                              |  | 60           | 58.36       | 24               | 110              | 2960          |
| E-KM25B                              |  | 50           | 48.86       | 29               | 130              | 2790          |
| E-KM25B                              |  | 40           | 40.09       | 35               | 130              | 2610          |
| E-KM25B                              |  | 30           | 29.33       | 48               | 130              | 2350          |
| E-KM25B                              |  | 25           | 24.07       | 59               | 130              | 2200          |
| E-KM25B                              |  | 20           | 20.21       | 70               | 130              | 2080          |
| E-KM25B                              |  | 15           | 14.92       | 94               | 130              | 1880          |
| E-KM25B                              |  | 12.5         | 12.47       | 113              | 130              | 1770          |
| E-KM25B                              |  | 10           | 10.47       | 134              | 130              | 1670          |
| E-KM25B                              |  | 7.5          | 7.73        | 182              | 100              | 1510          |

### E-KM35..,E-KB35.. $n_1=1400r/min$ 200Nm

| Unidades de engranajes<br>Gear Units |         | i<br>Nominal | i<br>Actual | $n_2$<br>[r/min] | $M_{2n}$<br>[Nm] | $Fr_2$<br>[N] |
|--------------------------------------|---------|--------------|-------------|------------------|------------------|---------------|
| <b>3 Fase/ Stage</b>                 |         |              |             |                  |                  |               |
| E-KM35C                              | E-KB35C | 300          | 302.50      | 4.7              | 170              | 4800          |
| E-KM35C                              | E-KB35C | 250          | 243.57      | 5.8              | 200              | 4800          |
| E-KM35C                              | E-KB35C | 200          | 196.43      | 7.2              | 200              | 4800          |
| E-KM35C                              | E-KB35C | 150          | 151.56      | 9.3              | 200              | 4650          |
| E-KM35C                              | E-KB35C | 125          | 122.22      | 12               | 200              | 4330          |
| E-KM35C                              | E-KB35C | 100          | 101.27      | 14               | 200              | 4070          |
| E-KM35C                              | E-KB35C | 75           | 73.33       | 20               | 160              | 3650          |
| E-KM35C                              | E-KB35C | 60           | 63.33       | 23               | 140              | 3480          |
| E-KM35C                              | E-KB35C | 50           | 52.48       | 27               | 120              | 3270          |
| <b>2 Fase/ Stage</b>                 |         |              |             |                  |                  |               |
| E-KM35B                              | E-KB35B | 60           | 60.50       | 24               | 170              | 3430          |
| E-KM35B                              | E-KB35B | 50           | 48.71       | 29               | 200              | 3190          |
| E-KM35B                              | E-KB35B | 40           | 39.29       | 36               | 200              | 2970          |
| E-KM35B                              | E-KB35B | 30           | 30.31       | 47               | 200              | 2720          |
| E-KM35B                              | E-KB35B | 25           | 24.44       | 58               | 200              | 2530          |
| E-KM35B                              | E-KB35B | 20           | 20.25       | 70               | 200              | 2380          |
| E-KM35B                              | E-KB35B | 15           | 14.67       | 96               | 190              | 2130          |
| E-KM35B                              | E-KB35B | 12.5         | 12.67       | 111              | 165              | 2030          |
| E-KM35B                              | E-KB35B | 10           | 10.50       | 134              | 135              | 1910          |
| E-KM35B                              | E-KB35B | 7.5          | 7.60        | 185              | 100              | 1710          |

### E-KM45..,E-KB45.. $n_1=1400r/min$ 350Nm

| Unidades de engranajes<br>Gear Units |         | i<br>Nominal | i<br>Actual | $n_2$<br>[r/min] | $M_{2n}$<br>[Nm] | $Fr_2$<br>[N] |
|--------------------------------------|---------|--------------|-------------|------------------|------------------|---------------|
| <b>3 Fase/ Stage</b>                 |         |              |             |                  |                  |               |
| E-KM45C                              | E-KB45C | 300          | 297.21      | 4.8              | 350              | 6500          |
| E-KM45C                              | E-KB45C | 250          | 240.89      | 5.9              | 350              | 6500          |
| E-KM45C                              | E-KB45C | 200          | 200.66      | 7.0              | 350              | 6500          |
| E-KM45C                              | E-KB45C | 150          | 151.20      | 9.3              | 350              | 6500          |
| E-KM45C                              | E-KB45C | 125          | 125.95      | 12               | 350              | 5980          |
| E-KM45C                              | E-KB45C | 100          | 99.22       | 15               | 350              | 5520          |
| E-KM45C                              | E-KB45C | 75           | 75.45       | 19               | 350              | 5040          |
| E-KM45C                              | E-KB45C | 60           | 62.43       | 23               | 350              | 4730          |
| E-KM45C                              | E-KB45C | 50           | 49.18       | 29               | 350              | 4370          |
| <b>2 Fase/ Stage</b>                 |         |              |             |                  |                  |               |
| E-KM45B                              | E-KB45B | 60           | 59.44       | 24               | 350              | 4660          |
| E-KM45B                              | E-KB45B | 50           | 48.18       | 30               | 350              | 4340          |
| E-KM45B                              | E-KB45B | 40           | 40.13       | 35               | 350              | 4080          |
| E-KM45B                              | E-KB45B | 30           | 30.24       | 47               | 350              | 3720          |
| E-KM45B                              | E-KB45B | 25           | 25.19       | 56               | 350              | 3500          |
| E-KM45B                              | E-KB45B | 20           | 19.84       | 71               | 350              | 3230          |
| E-KM45B                              | E-KB45B | 15           | 15.09       | 93               | 350              | 2950          |
| E-KM45B                              | E-KB45B | 12.5         | 12.49       | 113              | 350              | 2770          |
| E-KM45B                              | E-KB45B | 10           | 9.84        | 143              | 350              | 2550          |
| E-KM45B                              | E-KB45B | 7.5          | 7.48        | 188              | 280              | 2330          |

### E-KM55..,E-KB55.. $n_1=1400r/min$ 500Nm

| Unidades de engranajes<br>Gear Units |         | i<br>Nominal | i<br>Actual | $n_2$<br>[r/min] | $M_{2n}$<br>[Nm] | $Fr_2$<br>[N] |
|--------------------------------------|---------|--------------|-------------|------------------|------------------|---------------|
| <b>3 Fase/ Stage</b>                 |         |              |             |                  |                  |               |
| E-KM55C                              | E-KB55C | 300          | 295.18      | 4.8              | 460              | 8300          |
| E-KM55C                              | E-KB55C | 250          | 240.89      | 5.9              | 500              | 8300          |
| E-KM55C                              | E-KB55C | 200          | 200.66      | 7.0              | 500              | 8300          |
| E-KM55C                              | E-KB55C | 150          | 151.20      | 9.3              | 500              | 8050          |
| E-KM55C                              | E-KB55C | 125          | 125.95      | 12               | 500              | 7580          |
| E-KM55C                              | E-KB55C | 100          | 99.22       | 15               | 500              | 7000          |
| E-KM55C                              | E-KB55C | 75           | 75.45       | 19               | 500              | 6390          |
| E-KM55C                              | E-KB55C | 60           | 62.43       | 23               | 450              | 6000          |
| E-KM55C                              | E-KB55C | 50           | 49.18       | 29               | 350              | 5540          |
| <b>2 Fase/ Stage</b>                 |         |              |             |                  |                  |               |
| E-KM55B                              | E-KB55B | 60           | 59.04       | 24               | 460              | 5890          |
| E-KM55B                              | E-KB55B | 50           | 48.18       | 30               | 500              | 5500          |
| E-KM55B                              | E-KB55B | 40           | 40.13       | 35               | 500              | 5170          |
| E-KM55B                              | E-KB55B | 30           | 30.24       | 47               | 500              | 4710          |
| E-KM55B                              | E-KB55B | 25           | 25.19       | 56               | 500              | 4430          |
| E-KM55B                              | E-KB55B | 20           | 19.84       | 71               | 500              | 4090          |
| E-KM55B                              | E-KB55B | 15           | 15.09       | 93               | 500              | 3730          |
| E-KM55B                              | E-KB55B | 12.5         | 12.49       | 113              | 460              | 3510          |
| E-KM55B                              | E-KB55B | 10           | 9.84        | 143              | 360              | 3240          |
| E-KM55B                              | E-KB55B | 7.5          | 7.48        | 188              | 280              | 2950          |

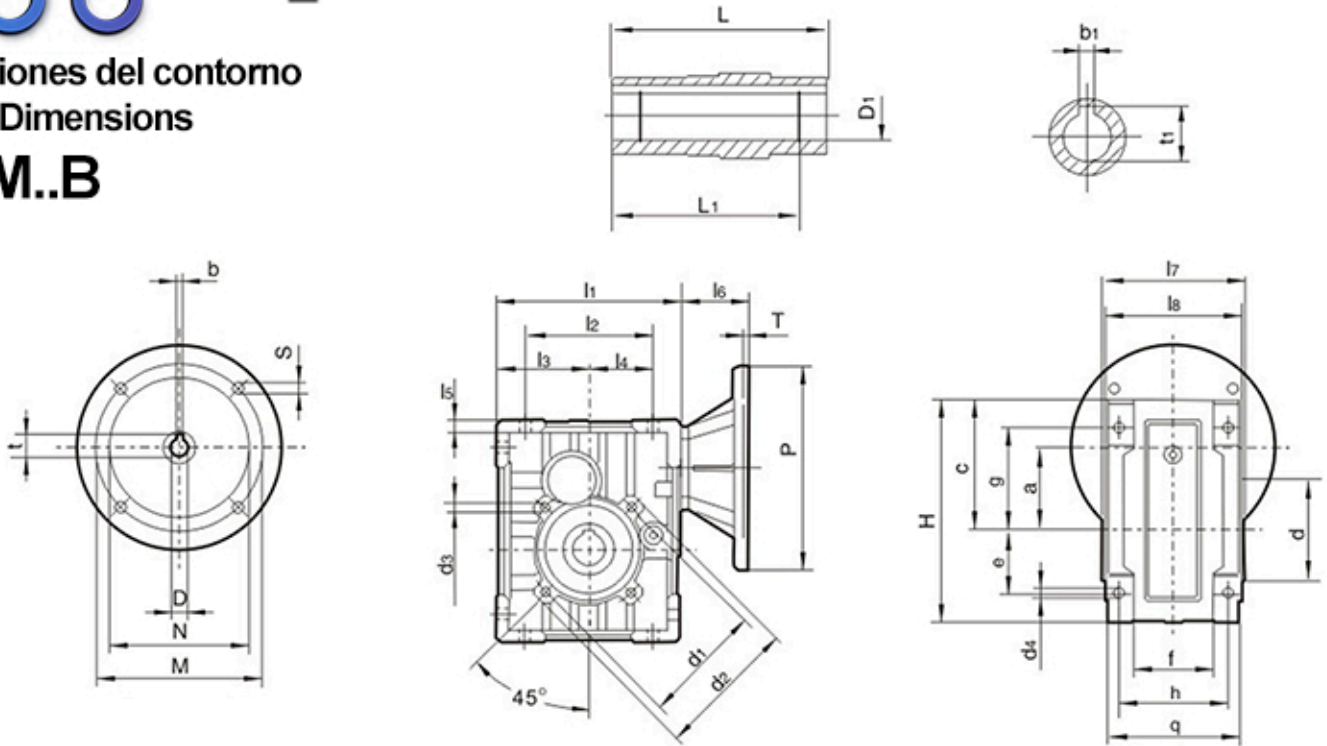


# adpmotion

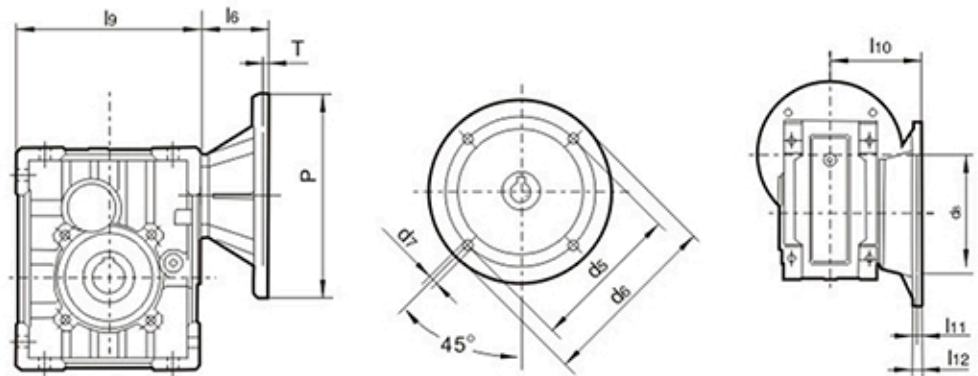
Dimensiones del contomo

Outline Dimensions

## E-KM..B



## E-KM..C



| IEC        | D <sub>EB</sub> | b  | t    | P   | M   | N   | S    | T   |
|------------|-----------------|----|------|-----|-----|-----|------|-----|
| 63B5       | 11              | 4  | 12.8 | 140 | 115 | 95  | 9    | 4   |
| 71B5       | 14              | 5  | 16.3 | 160 | 130 | 110 | 9    | 4   |
| 71B14      | 14              | 5  | 16.3 | 105 | 85  | 70  | 7    | 4   |
| 80B5       | 19              | 6  | 21.8 | 200 | 165 | 130 | 11   | 4   |
| 80B14      | 19              | 6  | 21.8 | 120 | 100 | 80  | 7    | 4   |
| 90B5       | 24              | 8  | 27.3 | 200 | 165 | 130 | 11   | 4   |
| 90B14      | 24              | 8  | 27.3 | 140 | 115 | 95  | 9    | 4   |
| 100/112B5  | 28              | 8  | 31.3 | 250 | 215 | 180 | 13.5 | 4.5 |
| 100/112B14 | 28              | 8  | 31.3 | 160 | 130 | 110 | 9    | 4.5 |
| 132B5      | 38              | 10 | 41.3 | 300 | 265 | 230 | 14   | 4.5 |

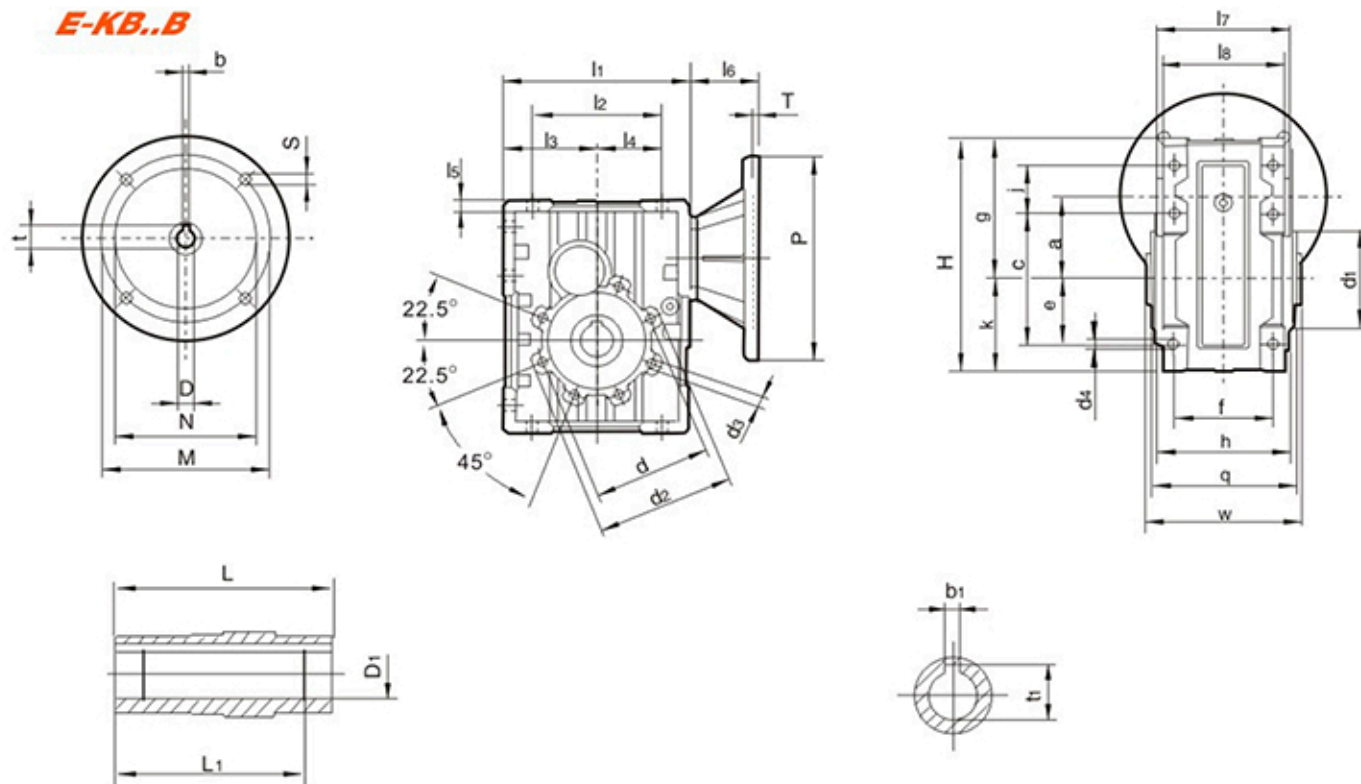
| IEC        | 25 | 35 | 45 | 55 |
|------------|----|----|----|----|
| 63B5       | 45 | 45 | —  | —  |
| 71B5       | 52 | 52 | 59 | 59 |
| 71B14      | 52 | 52 | 79 | 79 |
| 80B5       | 72 | 72 | 79 | 79 |
| 80B14      | 72 | 72 | 79 | 79 |
| 90B5       | 72 | 72 | 79 | 79 |
| 90B14      | 72 | 72 | 79 | 79 |
| 100/112B5  | —  | —  | 89 | 89 |
| 100/112B14 | —  | —  | 89 | 89 |
| 132B5      | —  | —  | —  | —  |

|           |    | d <sub>5</sub> | d <sub>6</sub> | d <sub>7</sub> | d <sub>8</sub> | l <sub>10</sub> | l <sub>11</sub> | l <sub>12</sub> |
|-----------|----|----------------|----------------|----------------|----------------|-----------------|-----------------|-----------------|
| E-KM25... | FA | 85             | 125            | 11             | 170            | 90              | 5               | 9               |
|           | FB | 85             | 125            | 11             | 170            | 120             | 5               | 9               |
|           | FC | 130            | 160            | 9.5            | 110            | 89              | 5               | 10              |
|           | FD | 115            | 140            | 11             | 95             | 72              | 5               | 14.5            |
| E-KM35... | FA | 150            | 180            | 11             | 115            | 82              | 6               | 10              |
|           | FB | 150            | 180            | 11             | 115            | 112             | 6               | 10              |
|           | FC | 165            | 200            | 11             | 130            | 98              | 5               | 10              |
|           | FD | 165            | 200            | 11             | 130            | 107             | 5               | 10              |
|           | FE | 130            | 160            | 14             | 110            | 80.5            | 5               | 16.5            |
| E-KM45... | FA | 165            | 200            | 14             | 130            | 111             | 6               | 13              |
|           | FB | 130            | 160            | 11             | 110            | 90              | 6               | 13              |
| E-KM55... | FA | 175            | 210            | 14             | 152            | 111             | 6               | 13              |
|           | FB | 215            | 250            | 14             | 180            | 122             | 6               | 18              |
|           | FC | 165            | 200            | 11             | 130            | 110             | 6               | 17              |
|           | FD | 175            | 210            | 14             | 152            | 151             | 6               | 13              |

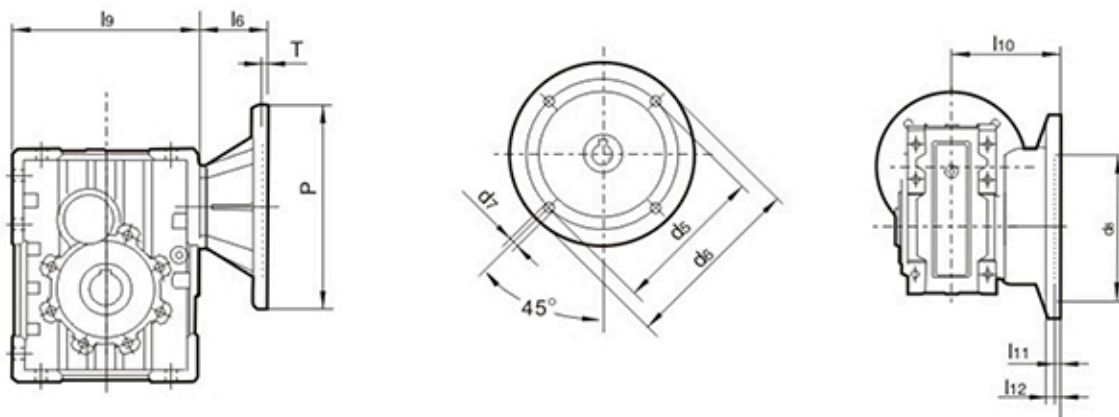
|           | H   | L   | L <sub>1</sub> | a    | c   | d   | d <sub>1</sub> | d <sub>2</sub> | d <sub>4</sub> | d <sub>5</sub> | e  | f  | g   | h   | q   | l <sub>1</sub> | l <sub>2</sub> | l <sub>3</sub> | l <sub>4</sub> | l <sub>5</sub> | l <sub>7</sub> | l <sub>8</sub> | l <sub>9</sub> | D <sub>108</sub> | b <sub>1</sub> | t <sub>1</sub> |
|-----------|-----|-----|----------------|------|-----|-----|----------------|----------------|----------------|----------------|----|----|-----|-----|-----|----------------|----------------|----------------|----------------|----------------|----------------|----------------|----------------|------------------|----------------|----------------|
| E-KM25... | 155 | 92  | 77             | 57   | 95  | 70  | 85             | 100            | 8.5            | M8*10          | 40 | 51 | 75  | 70  | 85  | 121            | 80             | 60             | 40             | 7              | 92             | 87             | 155            | 24               | 8              | 27.3           |
| E-KM35... | 174 | 112 | 97             | 64.5 | 102 | 80  | 95             | 110            | 8.5            | M8*14          | 50 | 63 | 80  | 85  | 103 | 144            | 100            | 72             | 50             | 9              | 112            | 106            | 178            | 25               | 8              | 28.3           |
| E-KM45... | 205 | 120 | 105            | 74.5 | 119 | 95  | 115            | 140            | 11.5           | M8*14          | 60 | 68 | 93  | 90  | 112 | 173            | 120            | 86             | 60             | 10             | 120            | 114            | 213            | 30               | 8              | 33.3           |
| E-KM55... | 238 | 140 | 122            | 88   | 135 | 110 | 130            | 160            | 13             | M10*18         | 70 | 74 | 102 | 100 | 130 | 206            | 140            | 103            | 70             | 11             | 140            | 134            | 246            | 35               | 10             | 38.3           |

## Dimensiones del contorno/ Outline Dimensions

### E-KB..B



### E-KB..C

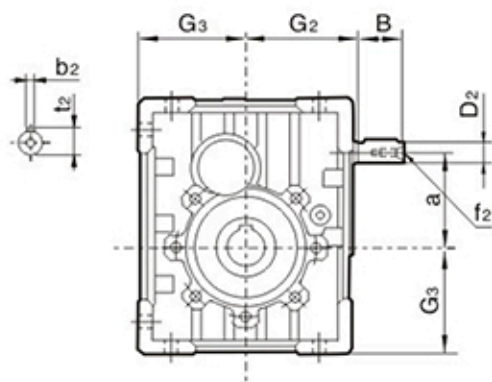
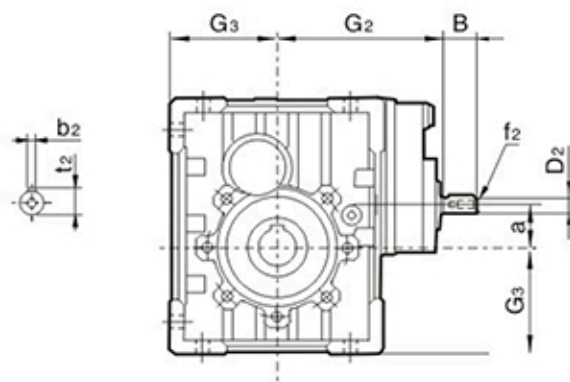


| IEC        | D <sub>EB</sub> | b  | t    | P   | M   | N   | S    | T   |
|------------|-----------------|----|------|-----|-----|-----|------|-----|
| 63B5       | 11              | 4  | 12.8 | 140 | 115 | 95  | 9    | 4   |
| 71B5       | 14              | 5  | 16.3 | 160 | 130 | 110 | 9    | 4   |
| 71B14      | 14              | 5  | 16.3 | 105 | 85  | 70  | 7    | 4   |
| 80B5       | 19              | 6  | 21.8 | 200 | 165 | 130 | 11   | 4   |
| 80B14      | 19              | 6  | 21.8 | 120 | 100 | 80  | 7    | 4   |
| 90B5       | 24              | 8  | 27.3 | 200 | 165 | 130 | 11   | 4   |
| 90B14      | 24              | 8  | 27.3 | 140 | 115 | 95  | 9    | 4   |
| 100/112B5  | 28              | 8  | 31.3 | 250 | 215 | 180 | 13.5 | 4.5 |
| 100/112B14 | 28              | 8  | 31.3 | 160 | 130 | 110 | 9    | 4.5 |
| 132B5      | 38              | 10 | 41.3 | 300 | 265 | 230 | 14   | 4.5 |

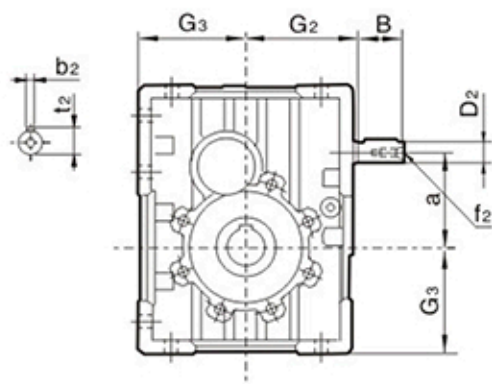
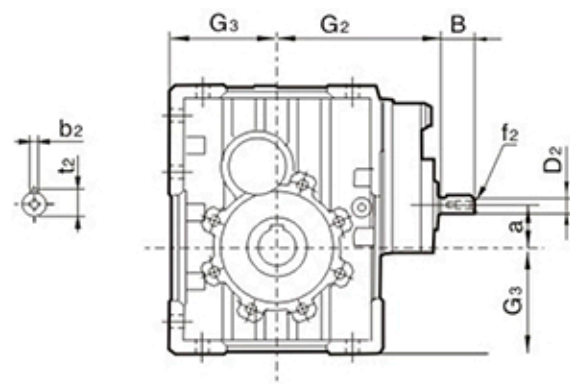
|            | 35 | 45 | 55 |
|------------|----|----|----|
| 63B5       | 45 | —  | —  |
| 71B5       | 52 | 59 | 59 |
| 71B14      | 52 | 79 | 79 |
| 80B5       | 72 | 79 | 79 |
| 80B14      | 72 | 79 | 79 |
| 90B5       | 72 | 79 | 79 |
| 90B14      | 72 | 79 | 79 |
| 100/112B5  | —  | 89 | 89 |
| 100/112B14 | —  | 89 | 89 |
| 132B5      | —  | —  | —  |

|           |    | d <sub>5</sub> | d <sub>6</sub> | d <sub>7</sub> | d <sub>8</sub> | l <sub>10</sub> | l <sub>11</sub> | l <sub>12</sub> |
|-----------|----|----------------|----------------|----------------|----------------|-----------------|-----------------|-----------------|
| E-KB35... | FA | 150            | 180            | 11             | 115            | 116             | 5               | 11              |
|           | FB | 150            | 180            | 11             | 115            | 86              | 5               | 11              |
| E-KB45... | FA | 165            | 200            | 13.5           | 130            | 111             | 5               | 12              |
|           | FB | 165            | 200            | 13.5           | 130            | 85              | 5               | 12              |
|           | FC | 130            | 160            | 11             | 110            | 85              | 5               | 12              |
| E-KB55... | FA | 176            | 210            | 13.5           | 152            | 151             | 6               | 15              |
|           | FB | 176            | 210            | 13.5           | 152            | 110.5           | 6               | 15              |

|           | H     | L   | L <sub>1</sub> | a    | c   | d   | d <sub>1</sub> | d <sub>2</sub> | d <sub>4</sub> | d <sub>3</sub> | e  | f  | g     | h   | q   | j    | k    | l <sub>1</sub> | l <sub>2</sub> | l <sub>3</sub> | l <sub>4</sub> | l <sub>5</sub> | l <sub>7</sub> | l <sub>9</sub> | w   | D <sub>125</sub> | b <sub>1</sub> | t <sub>1</sub> |
|-----------|-------|-----|----------------|------|-----|-----|----------------|----------------|----------------|----------------|----|----|-------|-----|-----|------|------|----------------|----------------|----------------|----------------|----------------|----------------|----------------|-----|------------------|----------------|----------------|
| E-KB35... | 182.5 | 120 | 105            | 64.5 | 102 | 75  | 90             | 105            | 9              | M8*14          | 51 | 54 | 110   | 76  | 94  | 37.5 | 72.5 | 145            | 102            | 72.5           | 51             | 9              | 120            | 178.5          | 106 | 25               | 8              | 28.3           |
| E-KB45... | 220.5 | 127 | 112            | 74.5 | 126 | 90  | 110            | 126            | 11             | M8*14          | 63 | 62 | 133.5 | 82  | 104 | 46.5 | 87   | 174            | 126            | 86.7           | 46.5           | 9              | 127            | 214            | 117 | 30               | 8              | 33.3           |
| E-KB55... | 224.5 | 140 | 122            | 88   | 144 | 110 | 130            | 150            | 12             | M10*18         | 72 | 74 | 145.5 | 100 | 125 | 45.5 | 100  | 203            | 144            | 100            | 72             | 11             | 140            | 243            | 129 | 35               | 10             | 38.3           |

**Dimensiones del contorno/ Outline Dimensions**
**E-KM..HS**
**E-KM..B..HS**

**E-KM..C..HS**


|         | B  | D <sub>2j6</sub> | G <sub>2</sub> | G <sub>3</sub> | a    | b <sub>2</sub> | f <sub>2</sub> | t <sub>2</sub> |
|---------|----|------------------|----------------|----------------|------|----------------|----------------|----------------|
| E-KM25B | 23 | 11               | 65             | 60             | 57   | 4              | -              | 12.5           |
| E-KM25C | 23 | 11               | 100            | 60             | 21.5 | 4              | -              | 12.5           |
| E-KM35B | 30 | 14               | 76             | 72             | 64.5 | 5              | M6             | 16             |
| E-KM35C | 23 | 11               | 111            | 72             | 29   | 4              | -              | 12.5           |
| E-KM45B | 40 | 16               | 91             | 86             | 74.5 | 5              | M6             | 18             |
| E-KM45C | 30 | 14               | 132            | 86             | 30.5 | 5              | M6             | 16             |
| E-KM55B | 40 | 19               | 107            | 103            | 88   | 6              | M6             | 21.5           |
| E-KM55C | 30 | 14               | 148            | 103            | 44   | 5              | M6             | 16             |

**Dimensiones del contorno/ Outline Dimensions**
**E-KB..B..HS**

**E-KB..C..HS**


|         | B  | D <sub>2j6</sub> | G <sub>2</sub> | G <sub>3</sub> | a    | b <sub>2</sub> | f <sub>2</sub> | t <sub>2</sub> |
|---------|----|------------------|----------------|----------------|------|----------------|----------------|----------------|
| E-KM35B | 30 | 14               | 76             | 72.5           | 64.5 | 5              | M6             | 16             |
| E-KM35C | 23 | 11               | 111            | 72.5           | 29   | 4              | -              | 12.5           |
| E-KM45B | 40 | 16               | 91             | 87             | 74.5 | 5              | M6             | 18             |
| E-KM45C | 30 | 14               | 132            | 87             | 30.5 | 5              | M6             | 16             |
| E-KM55B | 40 | 19               | 107            | 100            | 88   | 6              | M6             | 21.5           |
| E-KM55C | 30 | 14               | 148            | 100            | 44   | 5              | M6             | 16             |